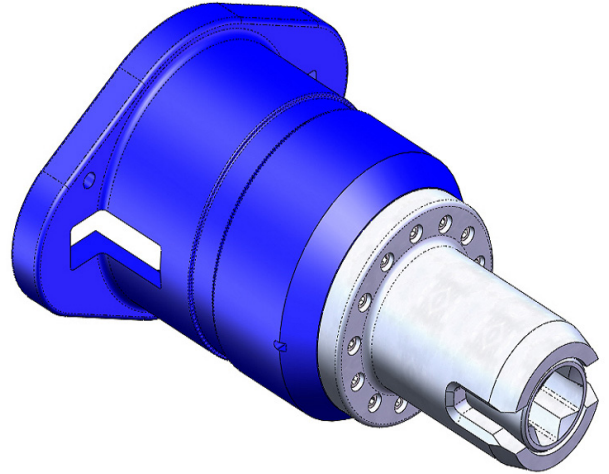


17D (Female) TO 17H (Male) Torque Tool Adapter

The adaptor is used to convert from ISO 13628-8 Class 4 (API 17D) to API 17H High Torque interface. Shear pins are supplied with the tool to protect the high torque interface from over torque.

Specifications

Female Interface: ISO 13628-8 fig 18 Class 1-4
 Male Interface: ISO 13628-8 Fig 14 High Torque
 Maximum Torque: 2,000Nm (1,500ft lbs)
 Weight in air/water: 14/10kg



Part Numbers & Options

A019-959-450 17D (Female) TO 17H (Male) Torque Tool Adapter
 A019-958-152/02 Surface Verification Unit
 A019-958-174 High Torque Tool Adaptor for Verification Unit
 (Includes adaptor and 35mm AF Square Shaft)

Features

- ISO 13628-8 Class 4 Female Bucket
- API 17H Male interface 35mm AF square
- Max Torque 2,700 Nm (2,000 ft lbs)
- Supplied with 900Nm and 2,700Nm Shear Pin
- Supplied in offshore suitable transit case