

3" Nominal Bore Hydraulic Hot Stab

The 3" bore single port stab is designed for use with high flows at low or medium pressures. It is ideal for suction anchor operations with a very low weight for its size. The male stab has an aluminum body and plastic hose. A pipe barb suits push-on 3" suction hose and clamps.

The receptacle can be supplied with a pipe weld stub, a flange, or for flush mounting. The flush mounted version has a vent tube to prevent pressure lock. All can be supplied with or without locking pins – the stab is inserted and rotated 45 degrees to lock. For full product range see sales drawing A001-360-012.

Specifications

- Maximum Pressure: +/- 10 Bar
- Materials: Male-Aluminium Alloy Main Body, ST Steel Handle and Hose Spigot, UHDPE Guide Nose
- Fluids: Most Liquids

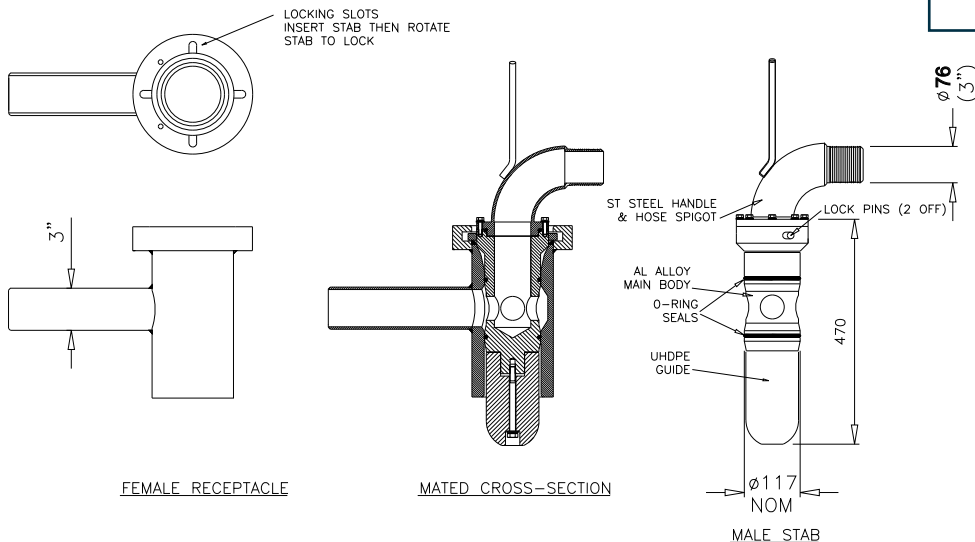


Part Numbers & Options

- A036-048-072 3" Male Stab with D-Type Handle
- A036-048-026 3" Hot Stab dummy with t-bar handle
- A036-048-028 3" Male Stab dummy with D-Type Handle
- A036-048-070 3" Female Receptacle with pipe weld stub
- A036-048-075 3" Female Parking Receptacle

Features

- 10 Bar Operating Pressure in either Suction or Pumping
- Pressure Balanced
- Low Male Weight for Easy Handling



A001-350-016

Copyright © FORUM ENERGY TECHNOLOGIES, INC. • All rights reserved • SU1061.06.23