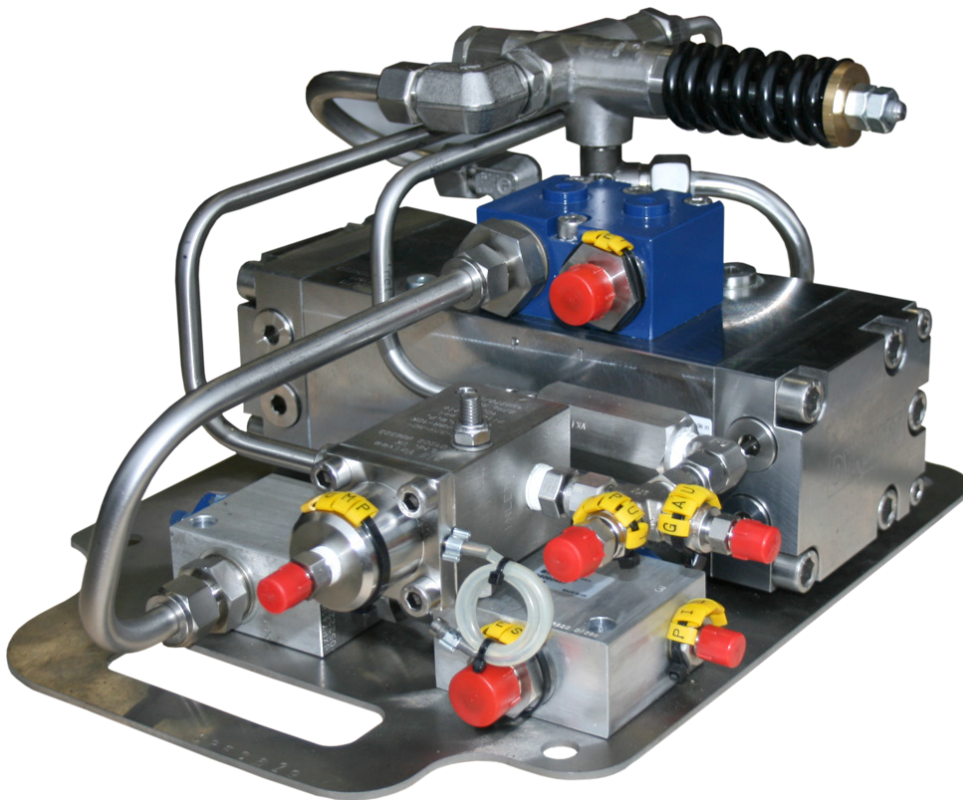


0-520Bar Pressure Test Unit

Pumping & Injection Systems.



DESCRIPTION

The 0-520Bar Pressure Test Unit can be used for a range of subsea pressure testing applications. An Integral relief valve is adjustable to provide any pressure range desired from 0.5 - 520Bar.

A subsea reservoir can be connected to the pump via the 3/4 suction port. When pressure testing is complete the depressurisation valve is actuated and pressure is dissipated back to reservoir.

FEATURES

Used for subsea pressure test operations

Includes depressurisation valve

Mounted on ROV friendly plate

Suitable for pumping seawater, mineral oil & glycol

0-520Bar Pressure Test Unit

Pumping & Injection Systems.

SPECIFICATIONS

Max Input Pressure	Pressure 210Bar (3,000psi)
Max Input Flow	60LPM (16 USgpm)
Max Output Pressure	520 Bar (7,500 psi)
Weight in air	28kg
Suitable for:	Seawater Glycol Hydraulic Oil Water

PART NUMBERS & OPTIONS

SRTS-034	0-520 Bar Pressure Test Kit
SRTS-34-S	Remote location spares kit

WHAT'S IN THE BOX

- 0-520 Bar Pressure Test Unit
- Operational hoses
- Operation & Maintenance Manual