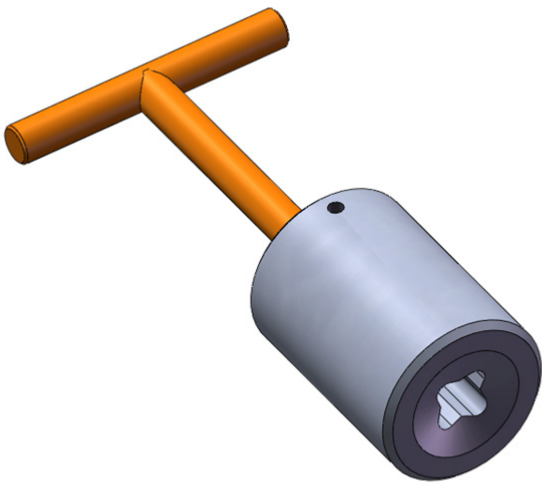


ISO 13628-8 Class 1&2 (API 17D) Manipulator Operated Torque Tool



DESCRIPTION

The tool is used to operate ISO Class 1-2 interfaces without the use of a torque tool. The tool utilises the rotate function on the manipulator to generate the required torque.

FEATURES

- ISO 13628-8 Fig 18 (API 17D); Class 1-2.
- Direct Manipulator Operation.
- Stainless steel construction

ISO 13628-8 Class 1&2 (API 17D) Manipulator Operated Torque Tool

SPECIFICATIONS

Interface:	ISO 13628-8 fig 18 Class 1-2 Socket
Maximum Torque:	Dependant on manipulator
Materials:	Stainless Steel
Weight in air/water:	3/2kg

WHAT'S IN THE BOX

Tool with socket

PART NUMBERS & OPTIONS

A019-958-480 Manipulator Operated Torque Tool

