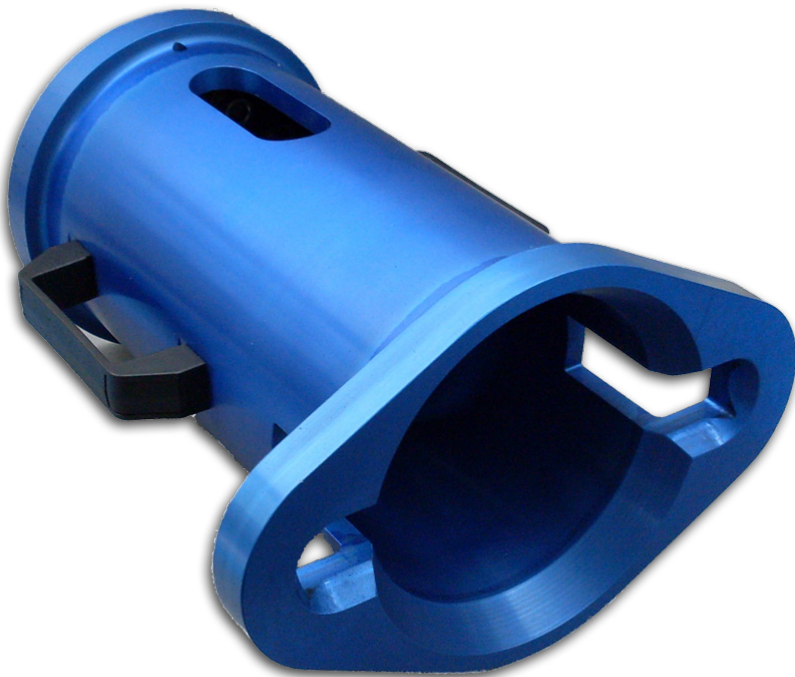


ISO 13628-8 Class 1-4 (API 17D) Surface Torque Tool Verification Unit.



DESCRIPTION

This unit is used to give pre-dive surface confirmation of the torque tool calibration. It consists of a standard ISO class 1-4 torque reaction bucket with sturdy base and built in torque sensor. The unit comes complete with USB cable to connect to the FORUM Torque Tool Control System for Auto Calibration.

FEATURES

- ISO 13628-8 Fig 18 (API 17D) Class 1-4
- Max Torque 2,700Nm(2,000ft lbs)
- Hand Held Digital Read Out
- USB output to Torque Tool Control System
- Includes easily Interchangeable Shafts to suit full range
- Supplied in offshore suitable transit case

ISO 13628-8 Class 1-4 (API 17D) Surface

Torque Tool Verification Unit.

SPECIFICATIONS

Torque Interface:	ISO 13628-8 fig 18 Class 1-4
Maximum Torque:	2,700Nm (2,000ft lbs)
Handheld Unit	Battery Powered
Materials:	Steel Shaft, Aluminium Housing

WHAT'S IN THE BOX

- Torque Tool Bucket inc sensor
- Class 1 & 2 Adaptor (11/16" Sq)
- Class 3 Adaptor (1-1/8" Sq)
- Class 4 Adaptor (1-1/2" Sq)
- Handheld Display
- Bucket to Display Cable
- Bucket to Display Cable
- Display to PC Cable

PART NUMBERS & OPTIONS

A019-958-152/02	Surface Verification Unit
A019-958-174	High Torque Tool Adaptor for Verification Unit (Includes adaptor and 35mm AF Square Shaft)
A019-958-175	Petrobras Torque Tool Adaptor for Verification Unit (Includes adaptor and 1-3/8"mm AF Hex Shaft)

