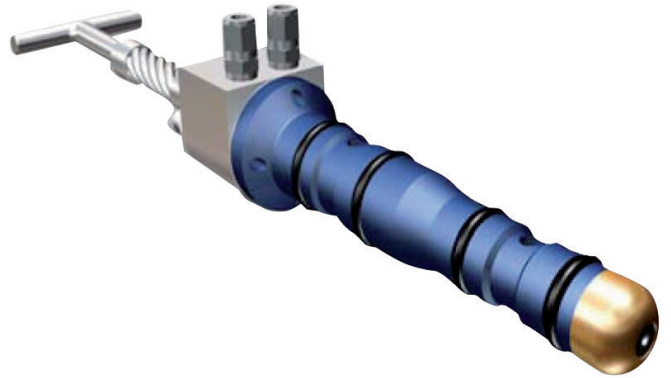


ISO Type A Dual Port Hydraulic Hot Stab

The dual port conforms to ISO 13628-8, but has larger internal fluid paths and integral sealing valves. The male has four check valves set inside the male body. These are 0.2 bar inflow, 2.5 bar outflow (i.e., will not dump the ROV compensator pressure). These minimise ROV oil leakage and water ingress, and prevent underpressure in the hoses, etc.

The female receptacle has two screw-in cartridges that do the same, but are normally 0.2 bar in/out. The female can be mounted by U-bolts around the body or flange; mounted by four bolts using a top-mounting interface plate.

Note: Flows up to 40 lpm can be achieved, check valves are only rated to 30lpm so need to be removed from system to achieve high flow.



Specifications

Working pressure:	230 bar (3,335 psi)
Flow Rate:	Up to 30 L/min (7.92 gal(US)/min) With Check Valves
Fluid:	Most hydraulic fluids and gases to 230 bar
Weight:	4kg (male stab with handle)
Port sizes:	All ports 3/8" NPT
Flow path:	Nominal path 8mm diameter throughout
Materials:	Stainless steel 316L and Duplex

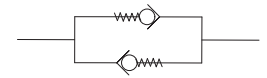
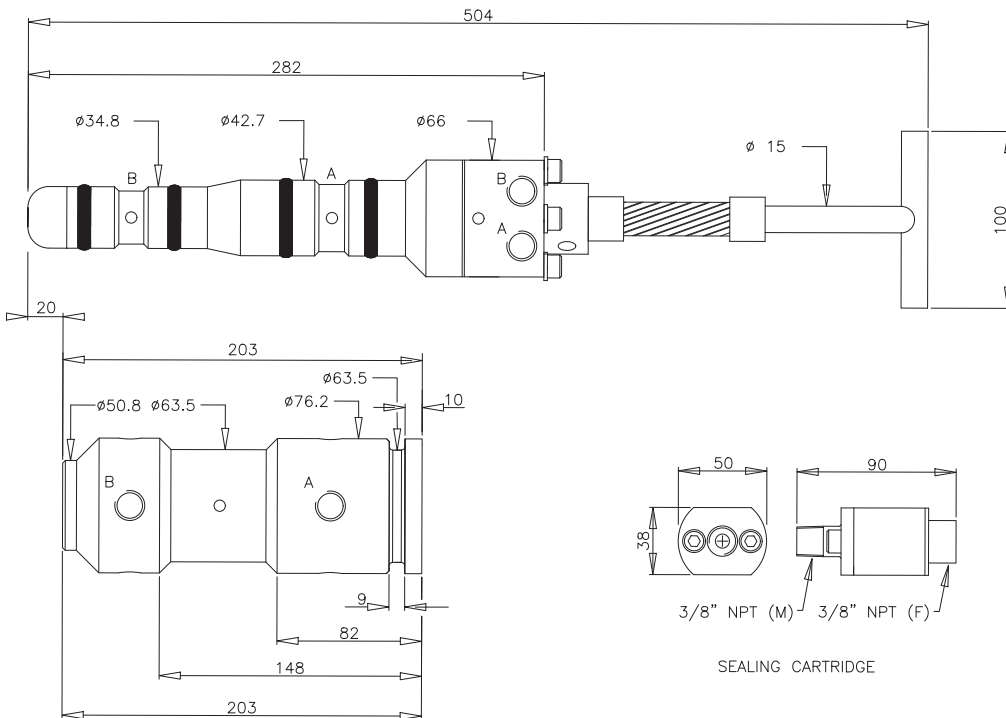
ISO Type A Dual Port Hydraulic Hot Stab

Part Numbers

A036-037-023	Male hot stab built in checks no handle
A036-037-041	T-Bar Style Handle
A036-037-105	Fish Tail Style Handle
A036-037-167	D-Type Handle
A036-037-030	Dummy Male Hot Stab
A036-037-013	Female Receptacle
A036-037-025	Female Receptacle Mount Plate
A036-037-042	Dummy Female
A036-037-018	Check valve to suit female receptacle (2 per receptacle req)
A036-037-113/01	Female Receptacle with Extra Ports

Features

- Industry Standard
- ISO 13628-8 Type A
- Up to 30 L/min (7.92 gal(US)/min) With Check Valves
- 230 bar (3,335 psi)
- Integral Sealing Valves
- Pressure Balanced



DETAIL OF SEALING VALVES FITTED INTERNALLY ON BOTH A & B LINES OF STAB BODY AND INSIDE EACH SEALING CARTRIDGE.