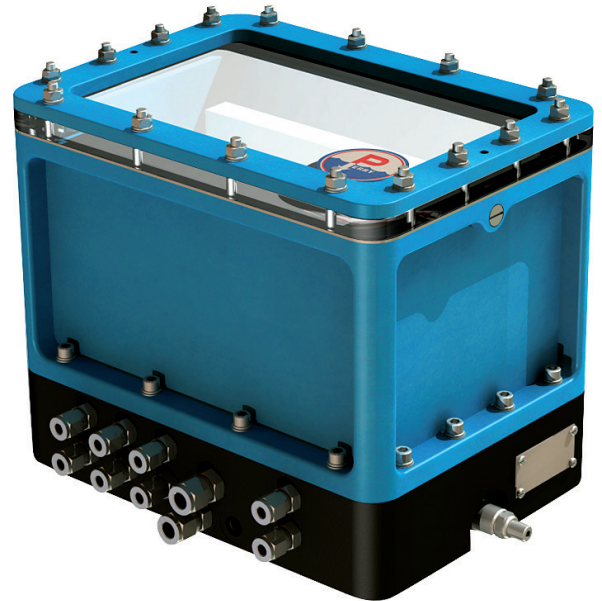


Torque Tool Control System

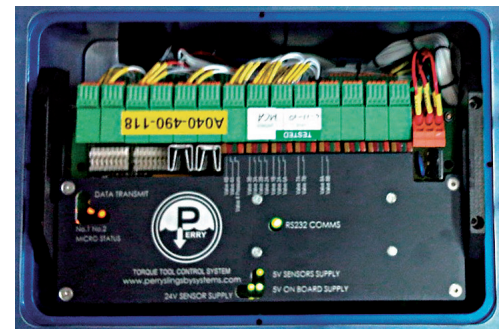
The Torque Tool Control System allows the user, from the surface, to adjust the torque and speed. This system is particularly suitable for deepwater operations where torque required for a particular operation may be uncertain, or has multiple values for different operations on the same dive. The actual torque and speed is user controlled and measured at all times and recorded for future reference.

The controller can be used with any torque tool supplied by FET (and most non-FET tools). The system can also be used as a pressure/flow controller for tools not equipped with feedback sensors.



Specifications

Outputs:	3 off NG3mini
Outputs:	1 off Proportional Pressure & Flow
Pressure Sensor:	One fitted to Proportional Pressure Line
Electrical Inputs:	Strain Gauge
Electrical Inputs:	Turns Counter
Protection:	Internal ground fault detection
Protection:	External pressure relief valve
Hydraulic Input:	20 lpm @ 200 Bar (6gpm at 3000 psi)
Hydraulic Output:	8lpm at 200Bar (per station)
Electrical Supply:	110VAC, 2A Maximum
Weight:	18 kg in air / 14 kg in water



Torque Tool Control System

Part Numbers

A286-001-050/04	Standard Torque Tool Control System
A286-001-050/S	Basic TTCS spares kit (Excl PCB's)
A286-001-050/04RS	Remote Location TTCS spares kit (Incl PCB's)

Features

- 1 off Bi-Directional Pressure & Flow Control output
- 3 off Bi-Directional output
- Strain gauge and turns count input
- Rated to 4,000m
- Supplied in offshore suitable transit case

What's in the box

- Box 1 of 2
- TTCS Hydraulic Manifold.
- Box 2 of 2
- Panasonic Toughbook control PC
 - Interconnect cables.
 - KK485 Convertor
 - Operations & Maintenance Manual

