

## 500RM Reamer Shoe

The FET Davis-Lynch™ 500RM features PVTS check valves, milled angled ribs, and an eccentric round nose. Down-jet ports improve circulation, turbulence and even distribution for well cementing applications even in challenging conditions. Since FET's purchase of Davis-Lynch over 500 Reamer Shoes have been run.

### Applications

- Onshore and offshore wells with unstable formations.

### Benefits

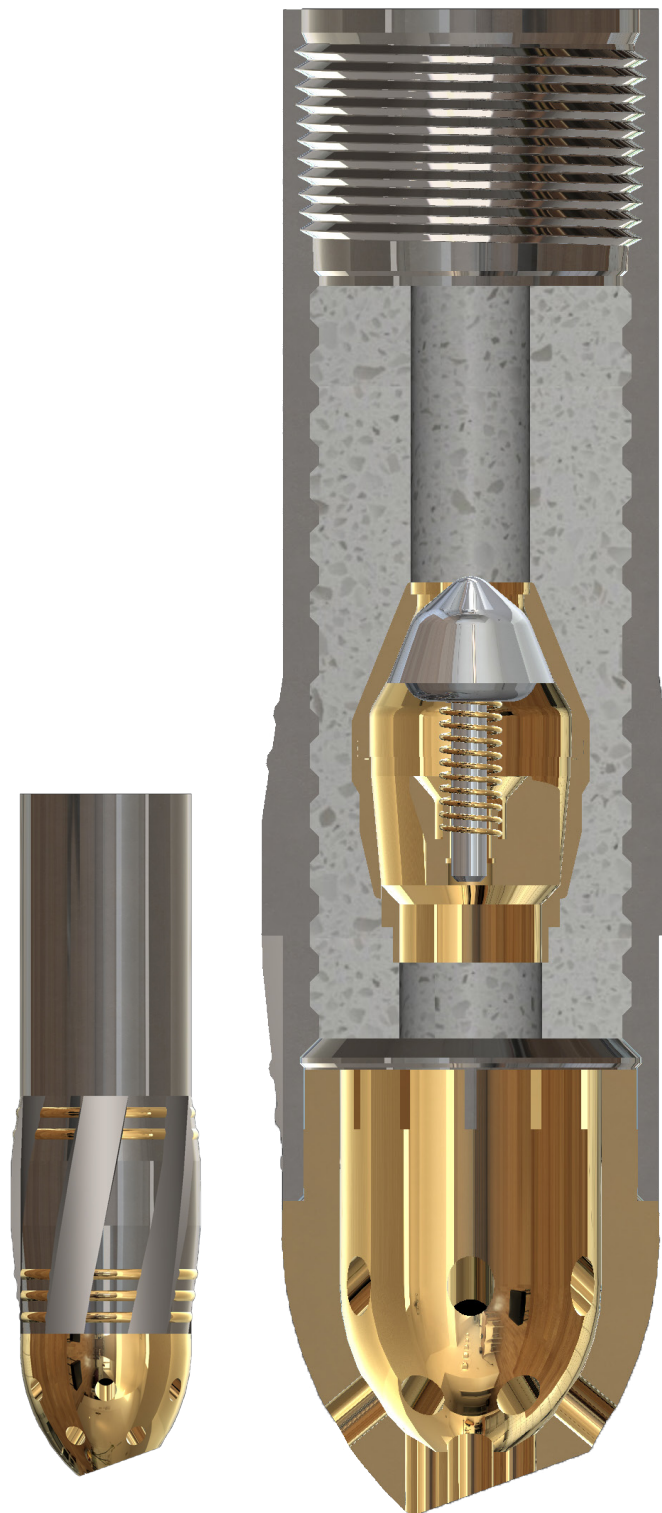
- Onshore and offshore wells with unstable formations.
- Rotation and reciprocation capable, but not required
- Provides superior performance to get casing down through unstable formations
- Not a drill-shoe and will not make a new hole
- PDC drillable

### Features

- Eccentric round nose
- Non-aggressive milled ribs with hard-banding
- Manual-fill

### Options\*

- No valve - guide shoe
- Double valve
- Composite nose
- Auto-fill



\* To be specified at time of order. Options cannot be retrofitted.