

Serpent Series™

Flexible hose solutions **built for real-world operations.**

FET Serpent Series™ flexible hose is the ultimate solution for replacing traditional iron. Engineered for extreme conditions, our hoses incorporate several unique design features including a multi-color interior wear liner and a patent-pending modular design that delivers unmatched repair and replacement capabilities. These key attributes provide enhanced operating capabilities that contribute to superior reliability, improved efficiencies, and lower total cost of ownership.



Delivering superior solutions **when upgrading from traditional iron.**

Serpent Series™ Advantages

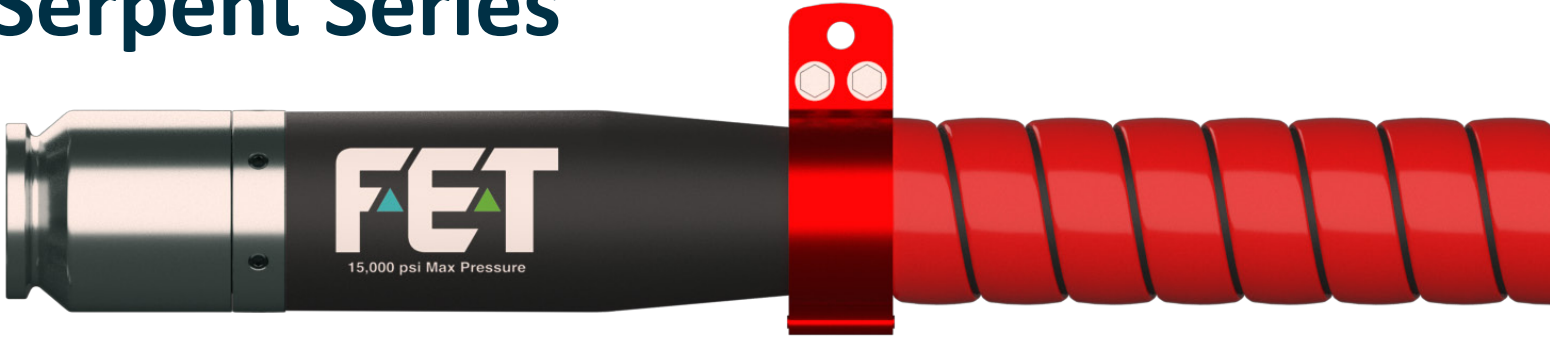
- 100% manufactured in the USA means operators can count on premium quality and timely delivery.
- Available in both 10K PSI and 15K PSI Max Working Pressure.
- Patent-pending modular ends allow for easy change out or replacement of end connections.
- Unique, multi-color interior wear liner offers a simple visual indicator of hose condition.
- Single-strand wire construction provides operational advantages on the minimum bend radius and enables single-point lifting capabilities without the potential of damaging the hose.

Benefits of Serpent Series™ Over Traditional Iron

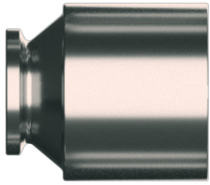
- Significant Reduction of End Connections
- Streamlines Rig Up and Rig Down Process
- Eliminates Recertification of Hundreds of High-Pressure Treating Iron Assets



Serpent Series™



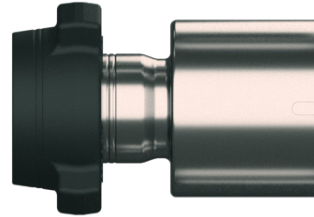
Modular connections for **unmatched end-fitting change capabilities.**



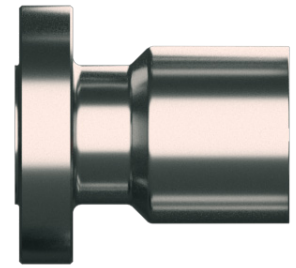
Grayloc® / API 16A Hub



Union Thread



Union Wing



API 6A Flange (Fixed & Rotating)

Flexible hose solutions **engineered to improve your operations.**

- Available in multiple lengths, from 2.5 to 6-in ID, and pressures up to 15,000 psi; with short lead times available.
- Rugged hose designed to withstand corrosive environments, with multi-colored liner for visual wear indication.
- Patent-pending modular end connections allow for easy end-fitting changes when failures occur and/or connection changes are required.

Serpent Series™ Technical Details

Hose Series	Hose ID (in)	Working Pressure (psi)	Max Rate (bbl/min)	Min Bend Radius (In Service)	End Connection Options
Viper	2.5	10,000 15,000	18.2	30"	Grayloc® / API 16A Hubs Hammer Unions API 6A Flange (Fixed & Rotating)
Cobra	3.0	10,000 15,000	26.2	30"	
Python	5.0	10,000 15,000	100.0	48"	
Anaconda	6.0	15,000	130.0	48"	

* 200' max length; additional end connection options can be applied per customer request.