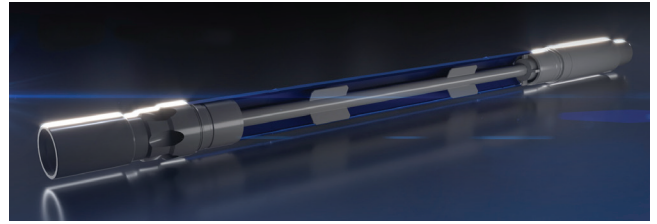


Pump Saver Plus

The Multilift Solutions **Pump Saver Plus** is designed to be installed below the rod pump, taking place of sand and gas equipment that is typically installed between the landing nipple and tail pipe, thus greatly reducing the overall length of the mud joint and eliminating the need of a packer.



Features

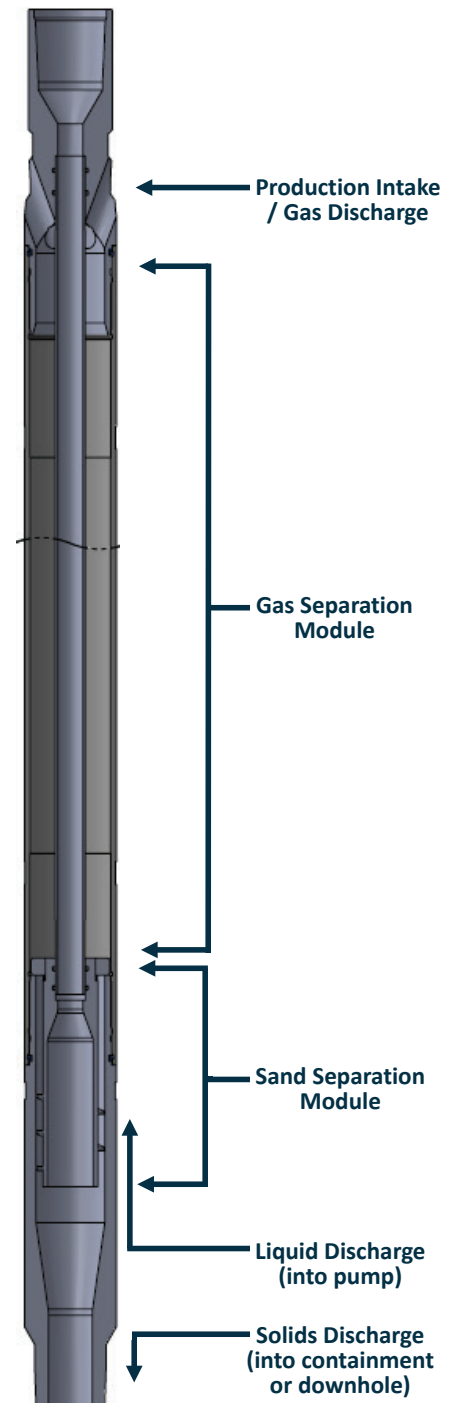
- Separates gas and sand without any impact or effect on pump function
- Negligible pressure drop through the tool
- No sand re-circulation
- Reduces costly workovers due to gas lock and sand obstruction
- Improves pump efficiency
- Extends run-life
- Enhances production and operating envelope

Benefits

- Reduces chance of gas lock, increasing uptime and production
- Reduces chance of abrasive wear and mechanical failure, reducing workover and equipment costs
- Increases run life of the rod pump and the integrity of artificial lift equipment
- No moving components, reducing the possibility of failure

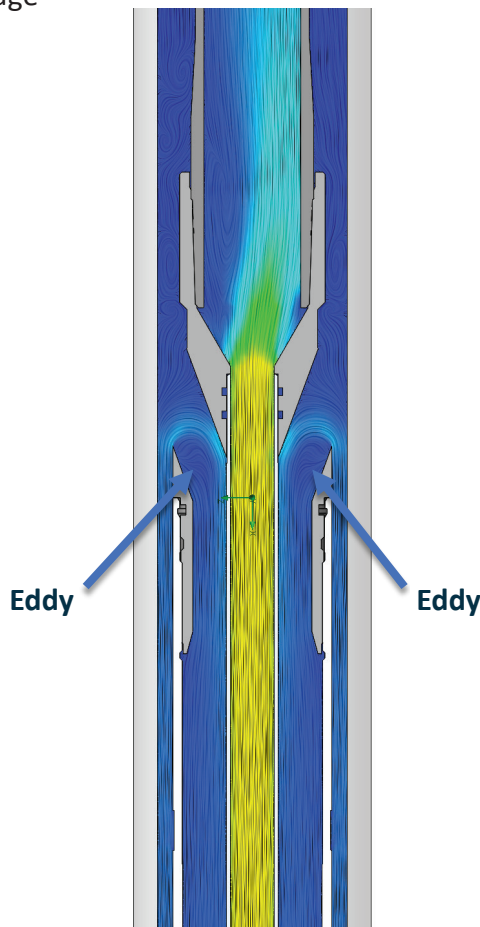
Applications

- Sucker Rod
- High abrasive conditions
- High GOR and GLR wells

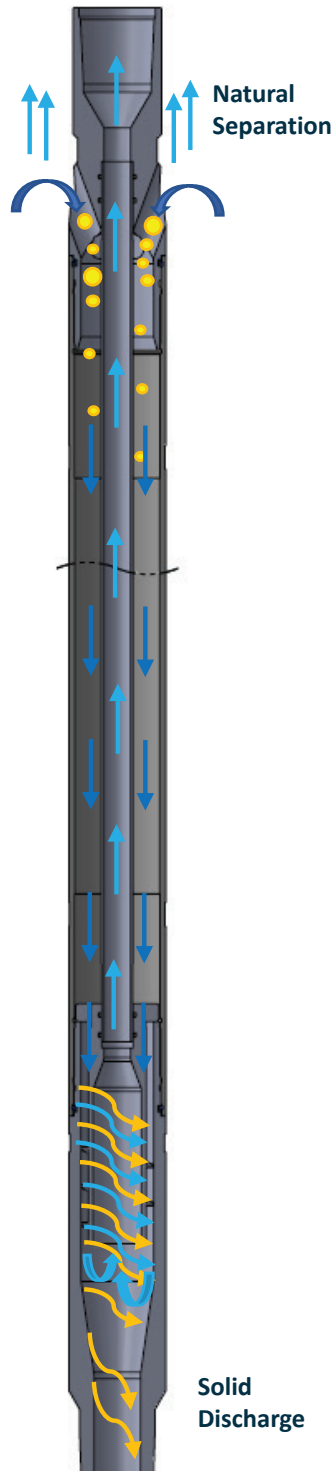


Eddy Features

- In a column of fluid, liquid falls around gas bubbles faster than bubble rises through static fluid
- The angled flow ports allow fluid to fall into the tool, rather than the pump drawing fluid in through a 90° intake port
- The motion creates eddy currents at specific points in the flow ports allowing the tool to naturally regulate and trap gas bubbles
- Gas bubbles remain situated high in the gas chamber and provides quick discharge and separation during the pumping unit down stroke
- Increases gas separation efficiency and pump fillage



Upstroke (producing)



Downstroke (static)

