

## Centralizer Sub

As a leading OEM for downhole casing equipment, Davis-Lynch is proud to manufacture Centralizer Subs for cementing challenges posed during lean profile drilling operations. Custom engineered to match or exceed the material grade and thread performance installed, Davis-Lynch Centralizer Subs' proven technology allows the unit to contract and expand as needed for the well bore situation. Run as an integral part of the casing string, our Centralizer Subs are offered in bow-spring and rigid versions and available in almost any casing size, grade, or thread and for use in the most challenging wellbore configurations.

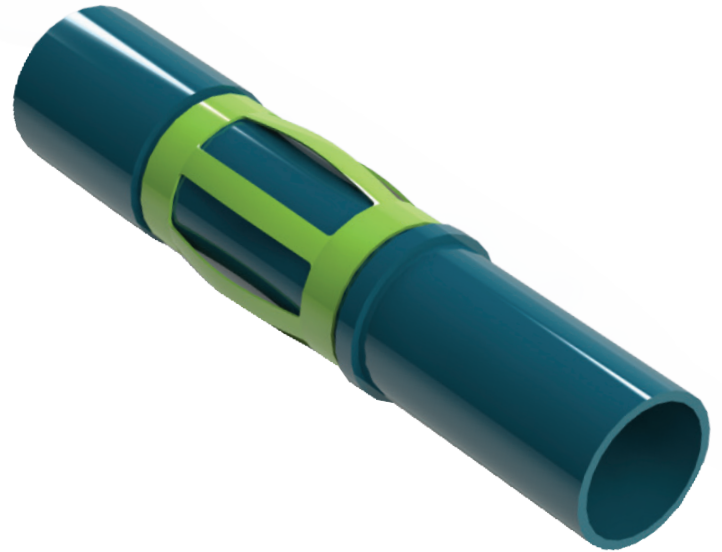
Designed to match the drift requirements on the connections being used, the Davis-Lynch Centralizer Sub is a tight-tolerance stack centralizer with special tested performance features that can collapse almost virtually flat, yet still respond back to a bow spring shape and provide sufficient restoring force in the open hole section.

### Design

- The Centralizer Sub becomes an integral part of the casing string.
- Sub designs can match most Casing Grade Materials and Casing Threads.
- Centralizer Designs can be of Bow Spring or Solid Vane type.
- Exceptional quality built with full traceability of component materials starting from the mill material certificates to well site delivery.

### Features

- The custom-designed centralizer is built onto the sub and is allowed to rotate freely and float on the sub.
- Allows for casing rotation



### Benefits

- Used in close tolerance and under-reamed wellbore applications
- Suited for use in horizontal, tortuous well paths, and passing through tight restrictions.
- Can pass safely through tight clearance Sub- Sea equipment such as Well Heads, Connectors, and Landing Seats.

Casing Size	Bow ID (in)	Rigid OD (in)
7	8.5	7.25
9 5/8	12.25	10.25
9 7/8	12.25	10.25
11.75	14.75	12
13 5/8	17.5	13.93
14	17.5	14.5
16	20	16.4
18	22	18.4