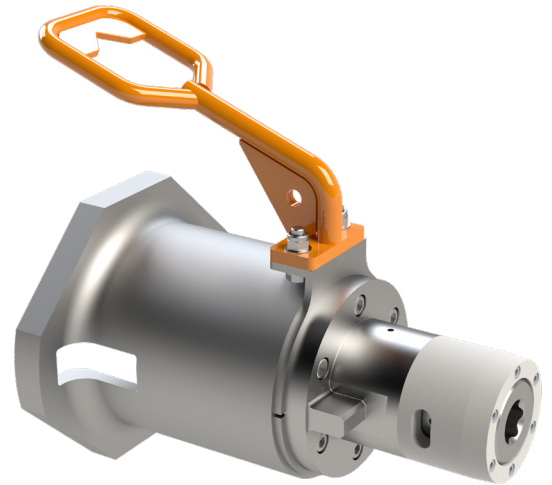


# API/ISO to Petrobras Torque Tool Adapter

The FET torque tool adapter offers a solution to operating Petrobras standard sockets using API/ISO torque tools. The tool may be docked onto the API/ISO torque tool prior to diving or during the dive.

The adapter is suitable for applying torque up to 2700 Nm, and is supplied with a range of sockets that are easy to change with hand tools.

To suit operations, the position of the adapter handle can be adjusted in 30° increments prior to use.



## Part Numbers

A019-994-501/01	ISO to Petrobras Converter – D-Type Handle
A019-994-501/02	ISO to Petrobras Converter – T-Bar Handle
A019-994-501/03	ISO to Petrobras Converter – Fishtail Handle

## Specifications

Input Interface	API 17H: 2013, Figure 12 Class 4 ISO 13628-8:2006, Figure 18 Class 4
Output Interface	Petrobras Standard
Socket Sizes	1-1/16" Hexagon Socket 1-1/4" Hexagon Socket 1-5/16" Hexagon Socket 1-3/8" Hexagon Socket 1-7/16" Hexagon Socket 1-1/4" Square/ Paddle/T-bar socket
Maximum Torque	2700 Nm (2000 ft lbs)
Materials	Stainless Steel, Aluminium, Acetal nose cone.
Weight (Air/Water)	15 kg (33 lb) / 11.5 kg (25.4 lb)
Maintenance Requirements	Clean and wash with fresh water after each use

