

Pump Saver Plus

QUICK FACTS

▶ All-in-One Tool for Rod Pump Gas and Sand Separation

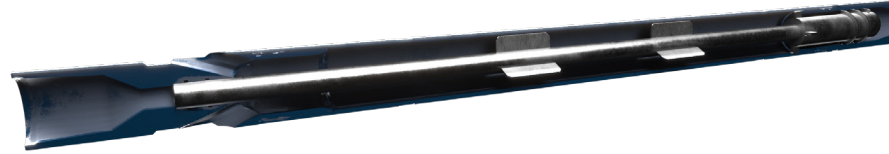
The Multilift Solutions **Pump Saver Plus** is designed to be installed below the rod pump, replacing the need for a gas and mud anchor. Typically installed between the landing nipple and tail pipe, the Pump Saver Plus **greatly reduces the overall length of the mud joint and eliminates the need for a packer.**

▶ Simplify and Optimize your Rod Pump and BHA Performance

By eliminating the need for rubber cup or elements and decreasing the overall length of BHA, the Multilift Solutions **Pump Saver Plus** technology allows operators to **simplify the lower production string requirements, optimizing the BHA and rod pump run life performance.**

▶ Proven Track Record in both Conventional and Unconventional Wells

Capable of running in conventional and unconventional applications, the **Pump Saver Plus** can be **configured to withstand the harshest downhole environments with casing-matched metallurgy**, including high GOR and GLR wells, and is **available in standard and custom thread connections.**



▶ Superior Design to Protect Your Rod Pump

Featuring Eddie current technology, the **Pump Saver Plus** improves gas separation to further and decrease rod pounding and disruptions. Adding protection from both solids and gas, the **Pump Saver Plus captures solids via a cyclonic separation mechanism that delivers a cleaner production fluid, while also taking the falling fluid to fill the tool via gravity**, not relying on the rod pump to pull the fluid into the tool.

▶ Regions and Basins Pump Saver Plus is Active

Our **Pump Saver Plus** customers are actively using our **tool in the major oil and gas regions/basins** throughout North America, South America, Asia, Africa, Europe, and Australia.

Looking for more?

Contact our artificial lift experts
for more information:

+1 866-943-3265

MultiliftSolutions@f-e-t.com

