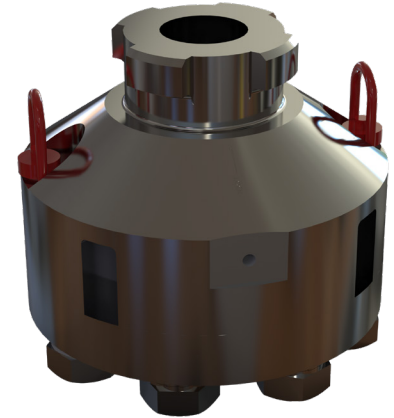


LAOT Surface Verification Unit

The FET LAOT Surface Verification Unit offers a capability to measure the force generated by an LAOT on deck prior to diving. The verification unit features a handheld digital display unit.

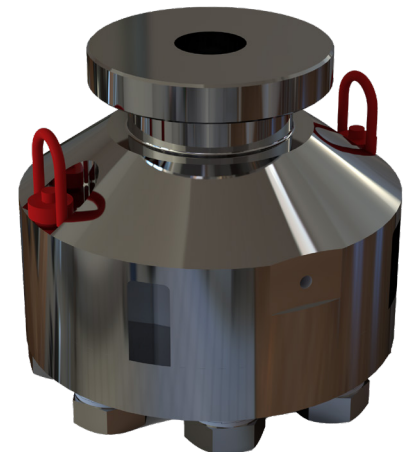
Specifications - Type A

Interface:	ISO 13628-8:2006, Type A API 17H, July 2019, Linear Push Interface Type A
Working Load Limit:	100 Tonnes
Load Cell Accuracy:	1% of scale
Materials:	17-4 PH (H1150 + 1150) Body Stainless Steel Load Cell
Weight:	82.3 kg



Specifications - Type B

Interface:	ISO 13628-8:2006, Type B API 17H, July 2019, Linear Push Interface Type B
Working Load Limit:	76 Tonnes
Load Cell Accuracy:	1% of scale
Materials:	17-4 PH (H1150 + 1150) Body Stainless Steel Load Cell
Weight:	86.4 kg



Part Numbers

A036-049-731/01	LAOT VERIFICATION UNIT – TYPE A
A036-049-731/02	LAOT VERIFICATION UNIT – TYPE B

Note: this unit is not for use subsea.