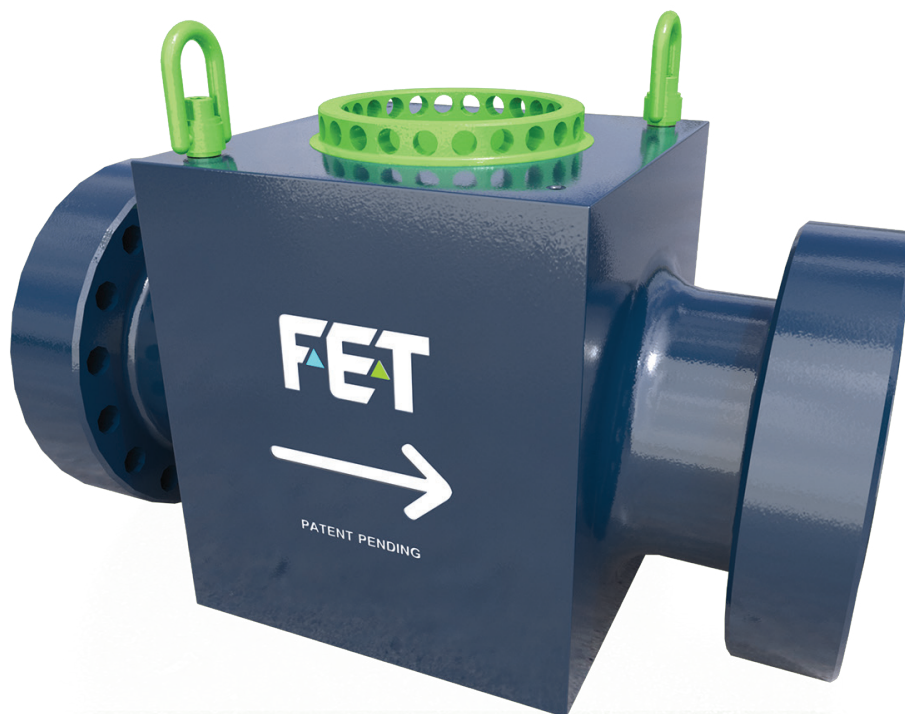


# 7" Check Valve

Pressure Pumping solutions **built for real-world operations.**

The FET Well Stimulation 7" Check Valve is engineered to meet the demanding world of pressure pumping head-on, offering unparalleled advantages proven to elevate operational performance. With its enhanced flow capacity and robust design, the 7" check valve ensures optimal fluid management and pressure control, crucial for effective well stimulation and maximized productivity.



## Key Design Features & Benefits

- Streamlined Flow Bore
- Field Replaceable Valve Seat
- Halo-Less Design
- Replaceable Flapper Seal
- Low-Cost Sealing Consumables
- One-Man Serviceability; No crane needed to remove top cap or handle any components
- Max Flow Rate: 120 Barrels Per Minute

Contact our experts at [Well.Stimulation@f-e-t.com](mailto:Well.Stimulation@f-e-t.com) to discover how the 7" check valve can transform your operations, delivering the reliability and efficiency you need to stay ahead of your competitors.