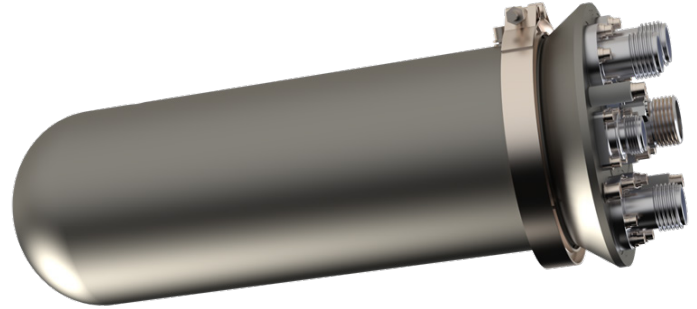


SDI Camera Interface Pod

For Perry ICE® and ICE Unity ROVs

Key Features

- Seamless upgrade from Composite SD to 3G-SDI, HD-SDI and SD-SDI video using readily available broadcast standard media converters
- No reduction in available ROV data channels - minimal rework of ROV JBs
- Utilizes existing camera controls (power, tri-state focus and zoom)
- Replaces 1 to 4 Composite SD video channels
- Maintains full isolation of individual camera interfaces



Video Transmission

- Medium: CWDM fibre channels
- Integration: Uses existing free wavelengths or spare fibre with internal CWDM
- Control Interface: Compatible with existing LCI or BCI PCBs
- Upgrade Options:
 - Up to 4 channels can be upgraded to SDI
 - Composite SD channels remain operational if not upgraded
 - Adding SDI channels (instead of replacing Composite SD channels) requires an additional LCI/BCI card and a possible software upgrade

Parameter	Details
Dimensions	Ø130 mm (body), Ø165 mm (flange) 410 mm long (excluding connectors)
Weight	9 kgf in air 3 kgf in water
Depth Rating	6000 m seawater (subject to connector rating)
Material	Aluminium alloy
Power Supply	24 Vdc from existing camera supplies
Control	Focus and zoom via existing tri-state controls
Isolation	Individual channel isolation via existing camera control PCB
Sensors	Water detection for horizontal/vertical installation
Channels Supported	1 to 4
Wavelength Options	1471, 1491, 1511, 1531, 1551, 1571, 1591, 1611 nm (per channel)
CWDM Option	Internal CWDM for use with spare ROV fibre
Connectors	- Burton 5506-2021 (to ROV junction box) - 1 to 4 Scorpion 455 series HD-SDI camera connectors - Scorpion SM 472 fibre optic connector (4-way to ROV CWDM or 1-way for internal CWDM)
Video Standards	- 3G-SDI: 1080p60 (SMPTE 424M, 2.97 Gbps) - HD-SDI: 720p, 1080i (SMPTE 292M, 1.485 Gbps) - SD-SDI: 480i, 576i (SMPTE 259M, 270/360 Mbps)
Optical Standard	Optical: SMPTE 297M
Optical Budget	18 dB typical

Part number B202-271-XXX-XXXX; depends on number of channels and optical wavelengths.

SU1100.06.25